



Public Health
England

Protecting and improving the nation's health

National End of Life Care Intelligence Network

The role of care homes in end of life care Slide set

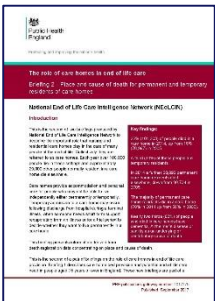
September 2017

© Crown copyright 2017
PHE publications gateway number 2017275

Supporting resources



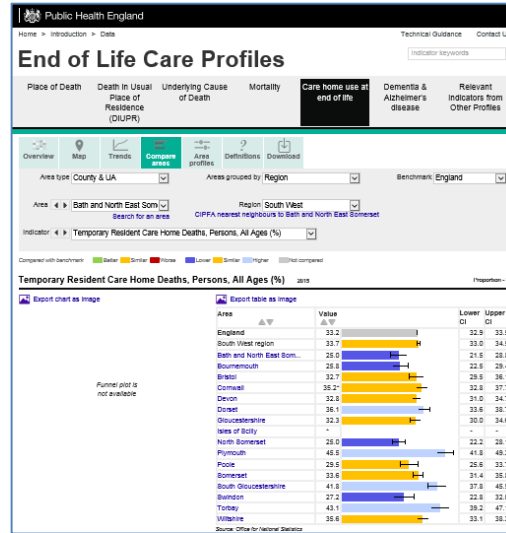
Briefing 1 – Care home bed provision and potential end of life care need in people aged 75 or older in England



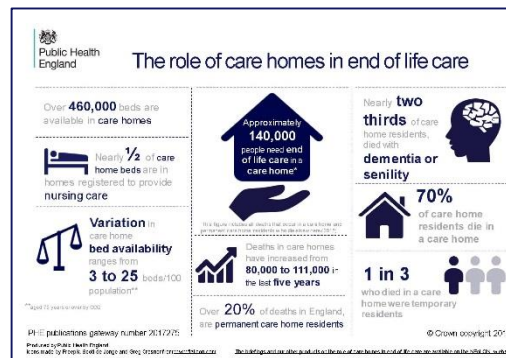
Briefing 2 – Place and cause of death for permanent and temporary residents of care homes



Results of a national survey of support to adult care homes in England: A specialist palliative care provider perspective



End of Life Care Profiles on Fingertips




Infographic – The role of care homes in end of life care

Available: <http://www.endoflifecare-intelligence.org.uk/resources/publications/carehomes>



Briefing 1 - Care home bed provision and potential end of life care need in people aged 75 or older in England

September 2017


Public Health
England

Protecting and improving the nation's health

The role of care homes in end of life care

Briefing 1 - Care home bed provision and potential end of life care need in people aged 75 or older in England

National End of Life Care Intelligence Network (NEOLCIN)

Introduction

This is the first of two briefings produced by the National End of Life Care Intelligence Network to describe the actual and potential role of care homes in provision of end of life care for people aged 75 years or over.

Care homes are becoming an increasingly important place for end of life care (EOLC) as the population ages because the weeks, months, and sometimes years before death are marked, for many, by physical and mental decline, frailty and increasing need for support and care. It is also recognised that for many people the acute hospital setting may not be the best place to provide end of life care.

In 2015, 493,498 people died in England of whom 111,738 (23%) died in a care home. The number of deaths in care homes has increased from 87,751 (20%) in 2011. Care homes are a major provider of end of life care.

105,099 permanent care home residents (all ages) died in 2015, 71% (74,634) of these died in a care home and 29% (30,465) died elsewhere, predominantly in hospital.

Key findings:

People aged 75 years or older account for 8% of the population of 54,786,327 (2015).

69% of deaths are in people aged 75 years or older (2015).

The population aged 75 years or older has increased from 4.1 million (2011) to 4.4 million (2015).

The number of deaths in people aged 75 years or older has increased by 13% (2011-2015).

In 2015/16 there were 462,035 care home beds in 15,765 care homes.

Care homes providing nursing care account for almost half of all care home beds (43%: 224,853 beds).

The number of beds in care homes has decreased (465,317 in 2012 to 462,035 in 2016). Nursing home beds have increased from 216,725 beds in 2012 to 224,853 in 2016.

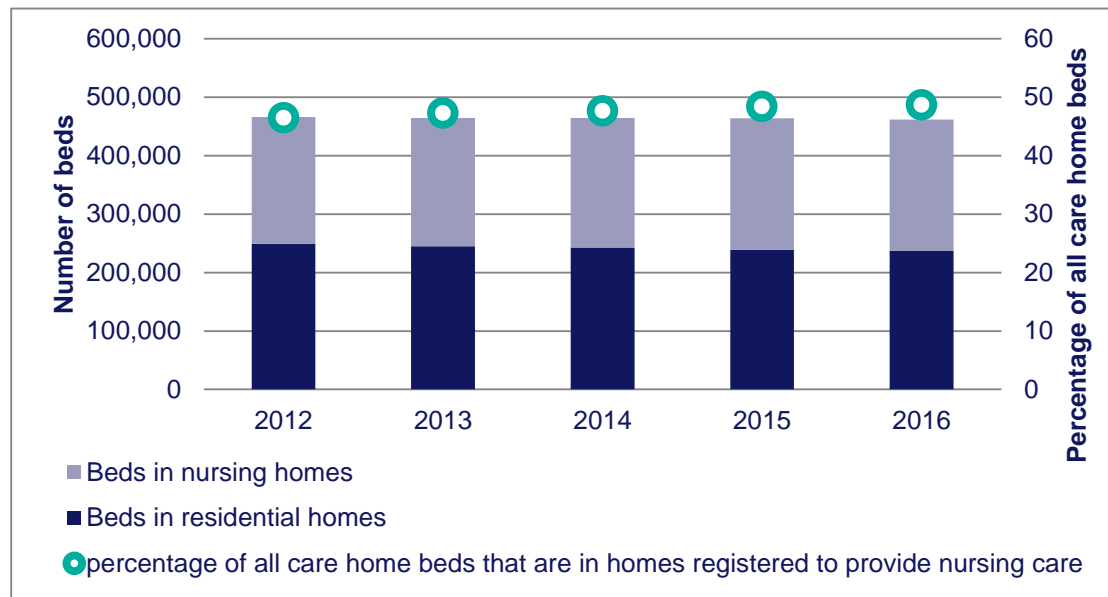
PHÉ publications gateway number: 2017275
Published: September 2017

Briefing 1 – Key findings

- People aged 75 years or older account for 8% of the population of 54,786,327 (2015)
- 69% of deaths are in people aged 75 years or older (2015).
- The population aged 75 years or older has increased from 4.1 million (2011) to 4.4 million (2015)
- The number of deaths in people aged 75 years or older has increased by 13% (2011-2015)
- In 2015/16 there were 462,035 care home beds in 16,765 care homes.
- Care homes providing nursing care account for almost half of all care home beds (49%; 224,853 beds)
- The number of beds in care homes has decreased (466,317 in 2012 to 462,035 in 2016). Nursing home beds have increased from 216,726 beds in 2012 to 224,853 in 2016

Number of beds in nursing and residential care homes, and proportion of all care home beds that are in care homes registered to provide nursing care, England 2012-2016

The role of care homes in end of life care: Briefing 1, Figure 1



Note: The last 5 annual data points differ according to data set: population (ONS mid-year estimates for CCGs), 2011 to 2015; deaths (ONS mortality) 2011 to 2015, care home beds (CQC) 2012 to 2016.

Change in care home bed rate (care homes, nursing homes and residential homes), England, 2012-2016

The role of care homes in end of life care: Briefing 1, Table 1

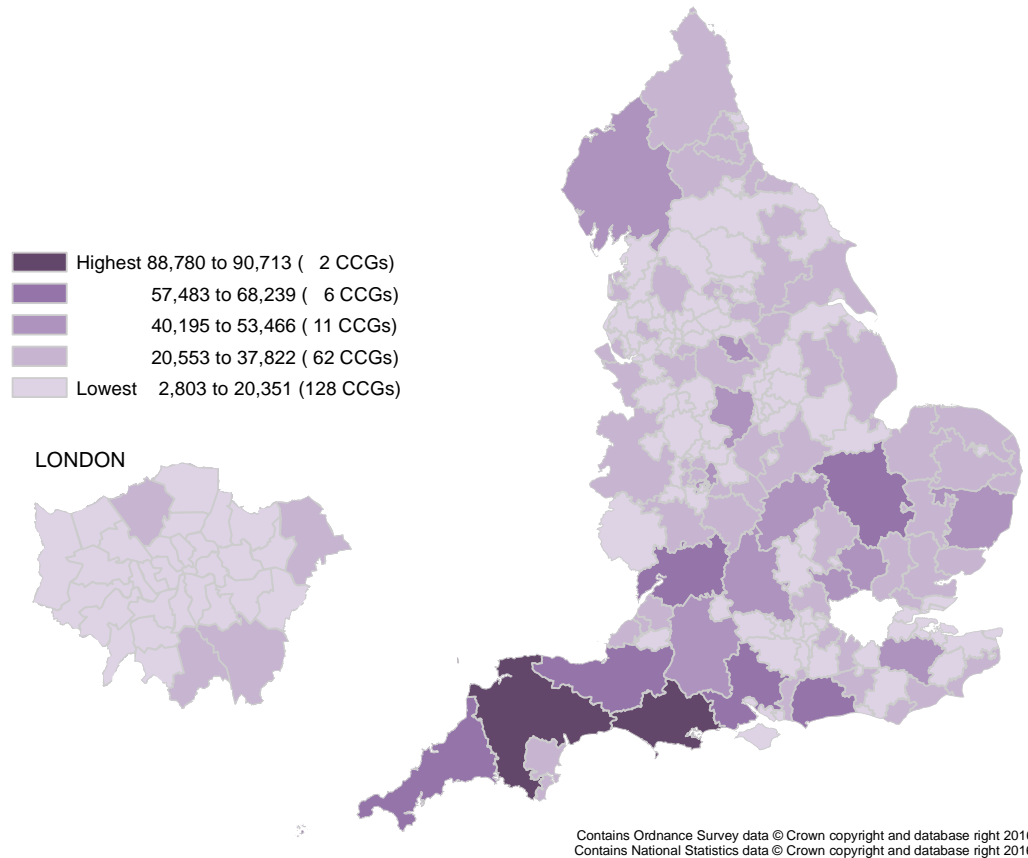
Care home bed rate	2012	2016	Rate change	% change
Beds per 100 population aged 75 or older				
England				
Care homes	11.3	10.4	-0.8	-7.4
Nursing homes	5.2	5.1	-0.2	-3.0
Residential homes	6.0	5.4	-0.7	-11.2
London				
Care homes	9.1	8.0	-1.1	-12.1
Nursing homes	4.8	4.5	-0.3	-6.5
Residential homes	4.3	3.5	-0.8	-18.5
Elsewhere- not London				
Care homes	11.5	10.7	-0.8	-6.9
Nursing homes	5.3	5.1	-0.1	-2.6
Residential homes	6.2	5.6	-0.7	-10.6

Sources: Population; ONS Mid-Year Population estimates for CCGs; Deaths, ONS Mortality data; Care home beds; Care Quality Commission.

Note: The latest four years of data cover slightly different time periods as follows - ONS Mid-Year Population estimates for CCGs, 2011 to 2015; ONS Mortality data, 2011 to 2015; Care Quality Commission care home beds, 2012 to 2016.

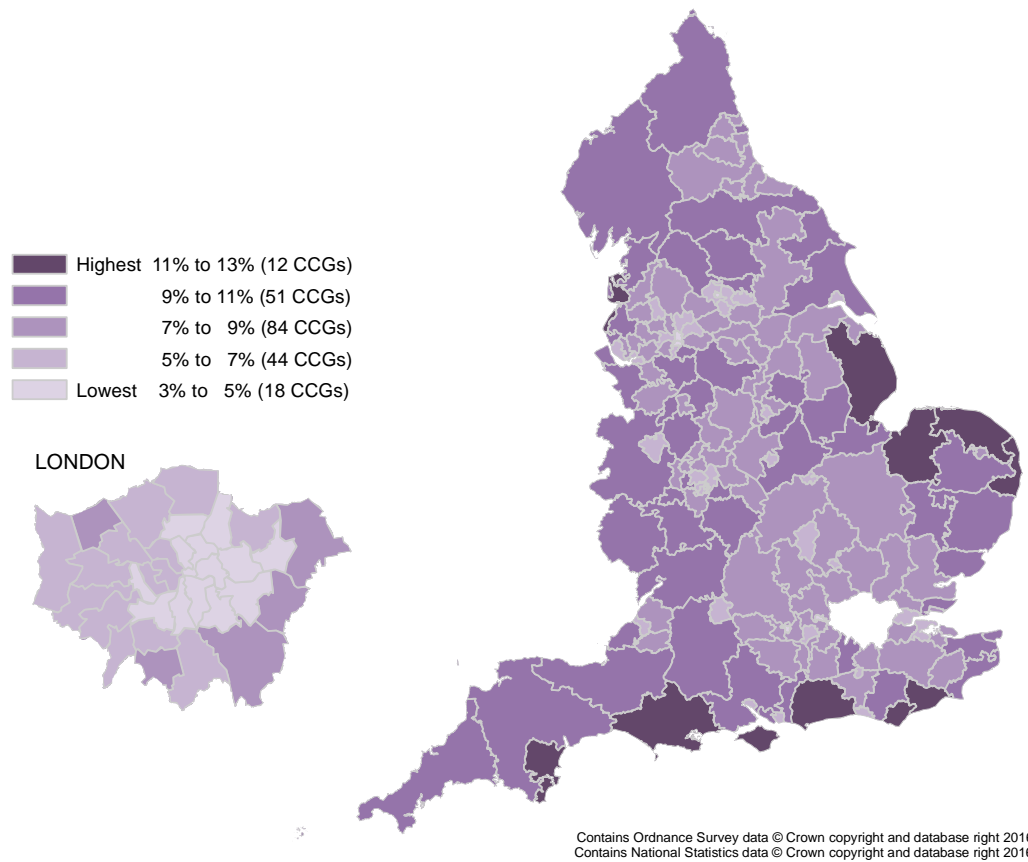
Variation in absolute numbers of people living who are aged 75 years or older by CCG, 2015

The role of care homes in end of life care: Briefing 1, Map 1



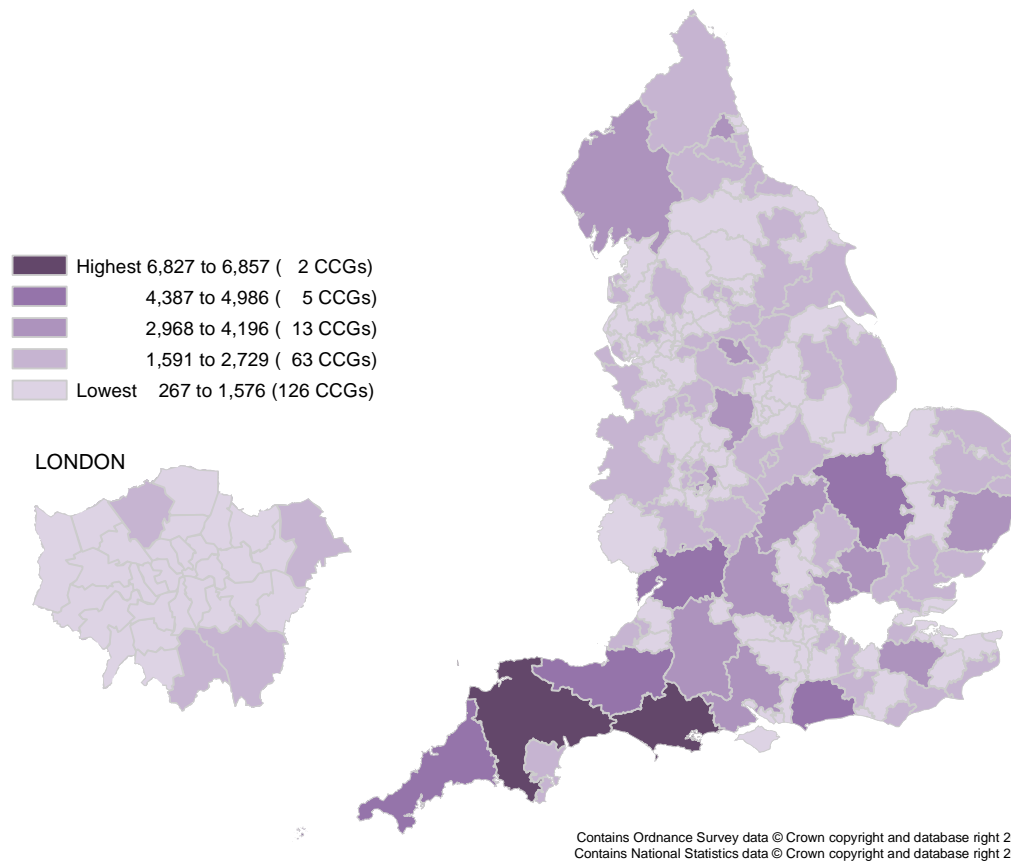
Variation in the proportion of the living population who are aged 75 or older, 2015

The role of care homes in end of life care: Briefing 1, Map 2



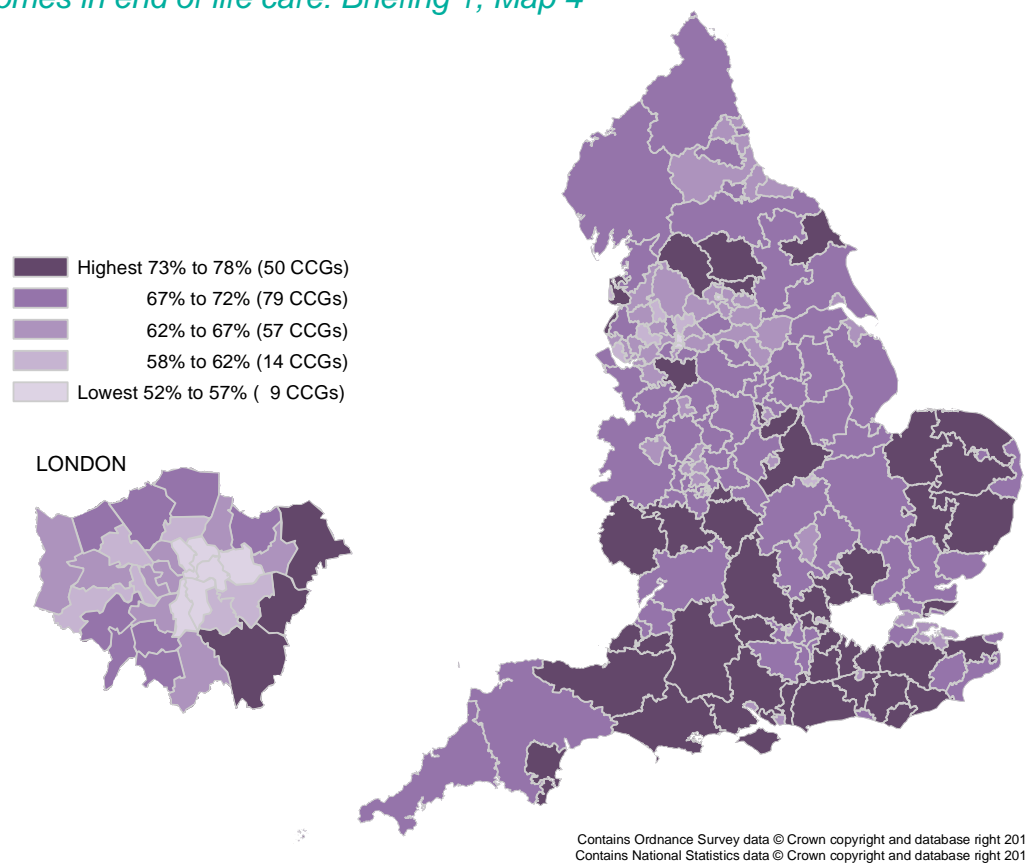
Variation in absolute numbers of deaths aged 75 years or older by CCG, 2015

The role of care homes in end of life care: Briefing 1, Map 3



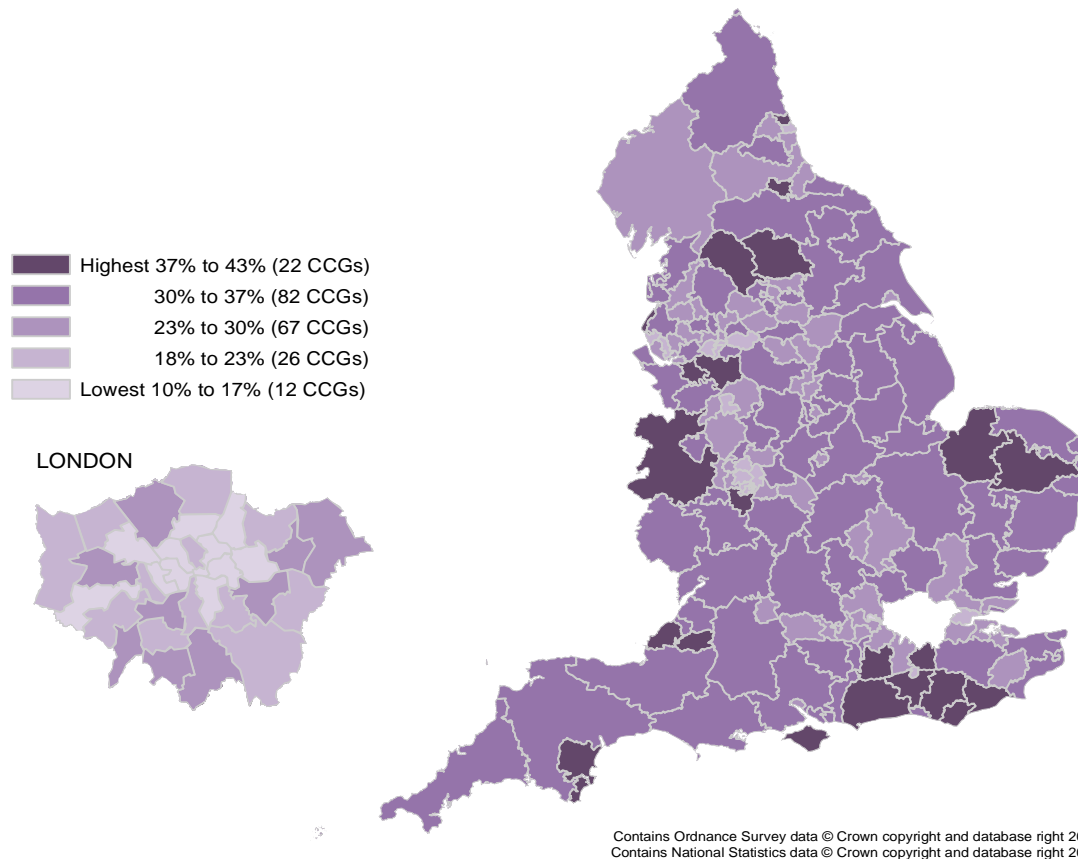
Variation in proportion of deaths aged 75 years or older by CCG, 2015

The role of care homes in end of life care: Briefing 1, Map 4



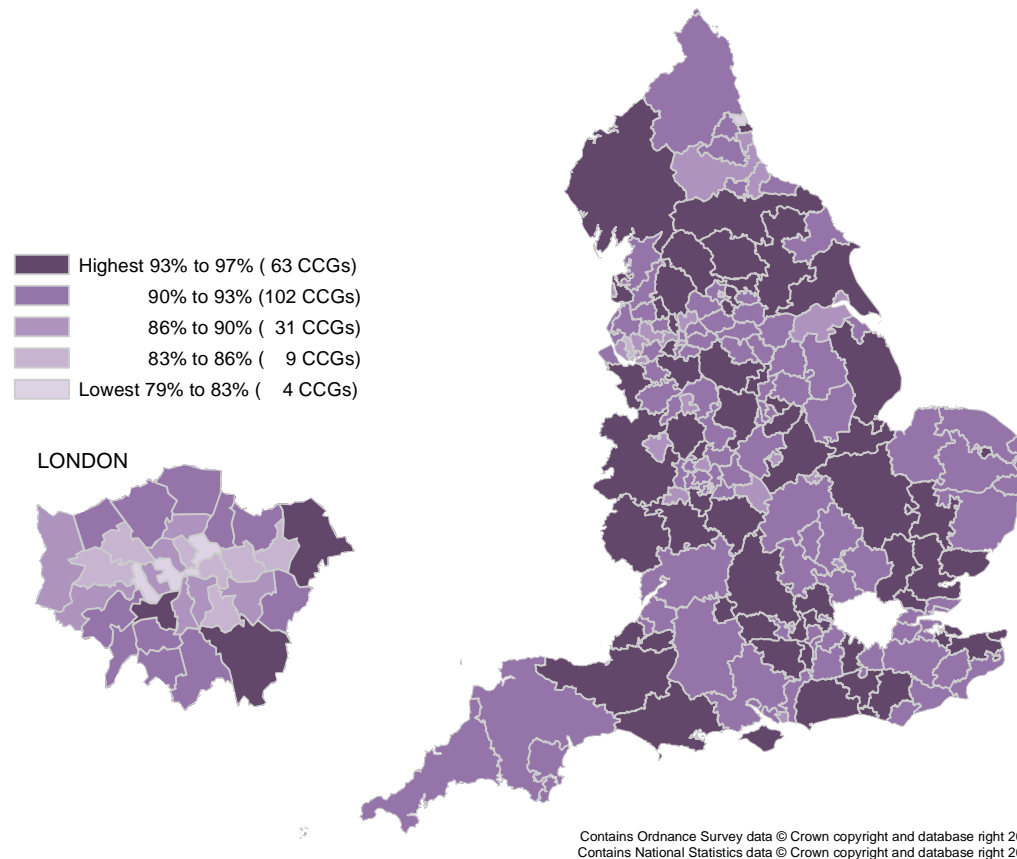
Variation in proportion of deaths in people aged 75 or older who died in a care home by CCG, 2015

The role of care homes in end of life care: Briefing 1, Map 5



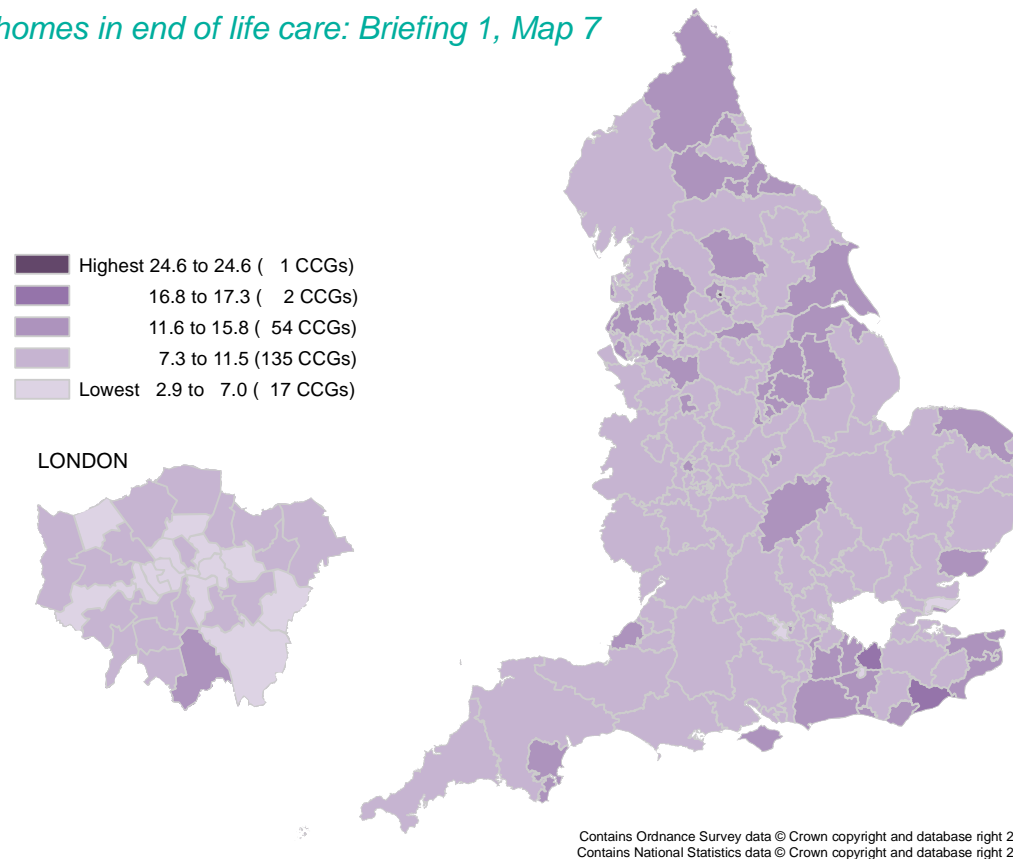
Variation in percentage of deaths in care homes that were 75 years or older by CCG, 2015

The role of care homes in end of life care: Briefing 1, Map 6



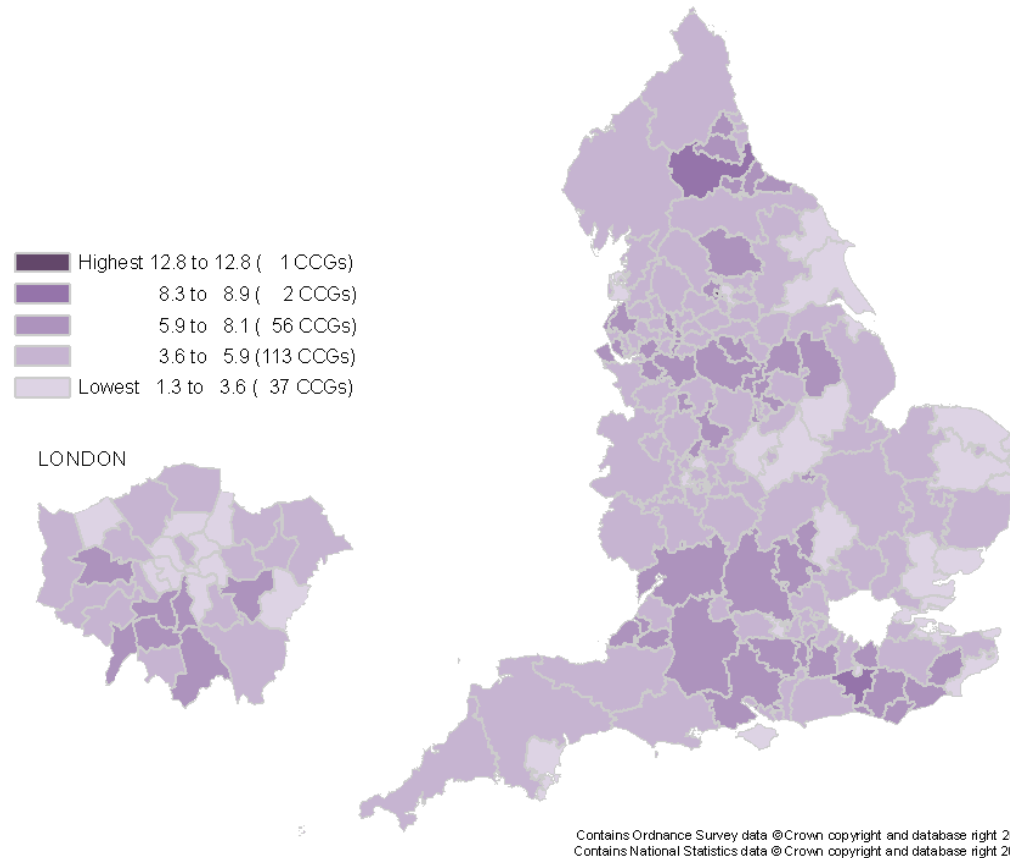
Variation in care home bed rate (nursing and residential) per 100 population aged 75 or older, by CCG, 2016

The role of care homes in end of life care: Briefing 1, Map 7



Variation in care home bed rate for nursing homes per 100 population aged 75 or older by CCG, 2016


The role of care homes in end of life care: Briefing 1, Map 8





Briefing 2 - Place and cause of death for permanent and temporary residents of care homes

September 2017


Public Health
England

Protecting and improving the nation's health

The role of care homes in end of life care
Briefing 2 - Place and cause of death for permanent and temporary residents of care homes

National End of Life Care Intelligence Network (NEoLCIN)
Introduction

This is the second of two briefings produced by National End of Life Care Intelligence Network to describe the important role that nursing and residential care homes play in the care of many people at the end of life. Collectively they are referred to as care homes. Each year over 100,000 people die in these settings and approximately 29,000 other people normally resident in a care home die elsewhere.

Care homes provide accommodation and personal care for people who may not be able to live independently either permanently or temporarily. Temporary admission to a care home may occur following discharge from hospital during a terminal illness, when someone needs short term support recuperating from an illness or for a trial period to decide whether they want to live permanently in a care home.

This briefing presents information derived from death registration data concentrating on place and cause of death.

This is the second of a pair of briefings on the role of care homes in end of life care provision. Briefing 1 describes care home bed provision and potential end of life care need in people aged 75 years or over in England. These new briefings are part of a

Key findings:

- 22% (101,203) of people died in a care home in 2014, up from 16% (78,927) in 2005.
- A third (34%) of these people are temporary residents.
- In 2014 a further 28,892 permanent care home residents died elsewhere, down from 36,734 in 2005.
- The majority of permanent care home residents die in a care home (70% in 2014 up from 55% in 2005).
- Nearly two thirds (62%) of people who died in care homes have dementia, Alzheimer's disease or senility as an underlying or contributory cause of death.

PH£ publications gateway number: 2017275
Published: September 2017

Briefing 2 – Key findings

- 22% (101,203) of people died in a care home in 2014, up from 16% (76,997) in 2005
- A third (34%) of these people are temporary residents
- In 2014 a further 28,892 permanent care home residents died elsewhere, down from 36,734 in 2005
- The majority of permanent care home residents die in a care home (70% in 2014 up from 58% in 2005)
- Nearly two thirds (62%) of people who died in care homes have dementia, Alzheimer's disease or senility as an underlying or contributory cause of death

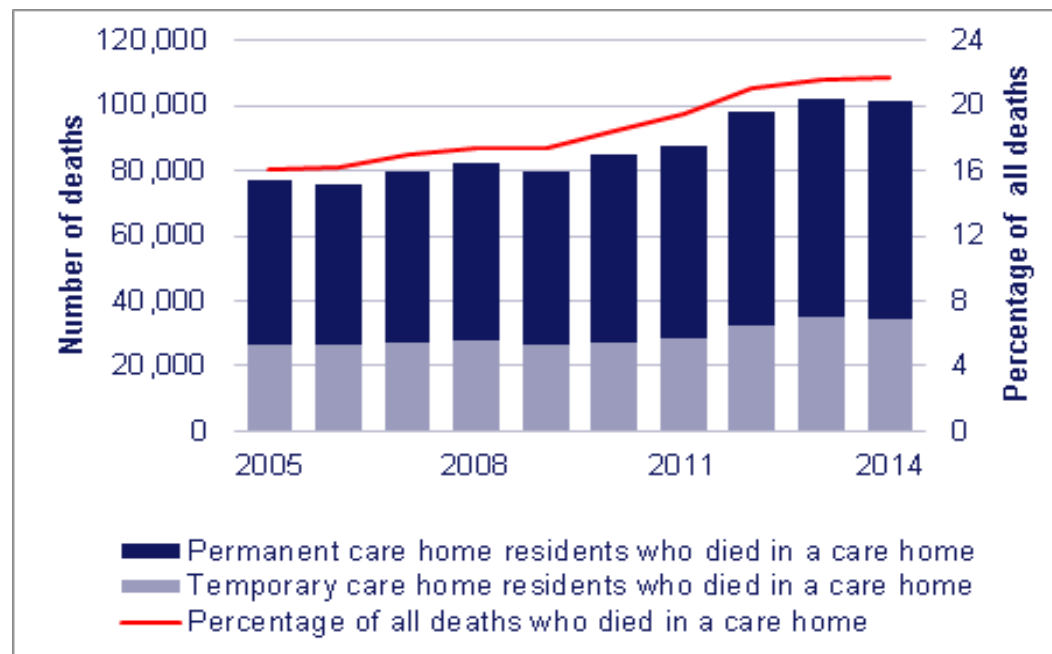
Number of deaths in care home, deaths of temporary care home residents and deaths of care home residents occurring elsewhere, England 2005 and 2014

The role of care homes in end of life care: Briefing 2, Table 1

	2014	2005
Total people who died	467,095	477,567
Number of people who died in a care home, (as a percentage of all people who died)	101,203 (22%)	76,977 (16%)
Number of care home residents who died somewhere other than a care home, (as a percentage of all people who died)	28,892 (6%)	36,734 (8%)
Number of temporary residents who died in care homes (as percentage of all people who died in a care home)	34,638 (34%)	26,272 (34%)
Number of permanent care home residents who died in a care home (as a percentage of all permanent residents of a care home who died)	66,565 (70%)	50,705 (58%)

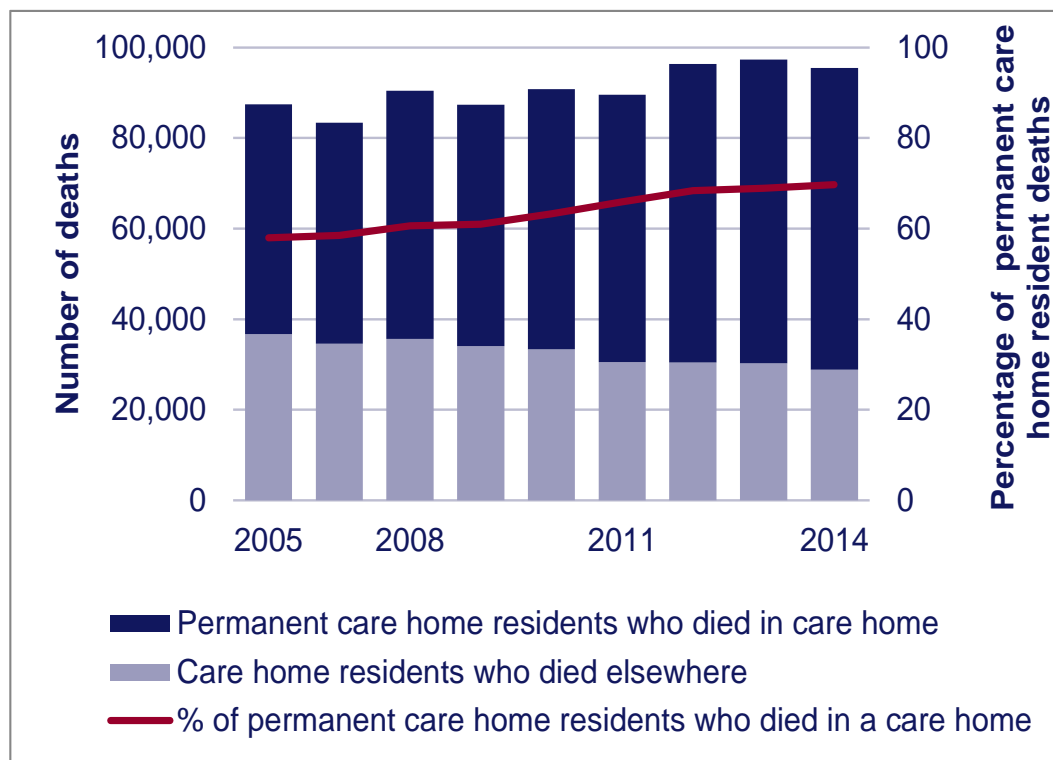
Number and percentage of deaths in care homes, England 2005-2014

The role of care homes in end of life care: Briefing 2, Figure 1



Number of deaths of permanent care home residents and where they died, England 2005-2014

The role of care homes in end of life care: Briefing 2, Figure 2



Distribution of broad underlying cause for death for deaths in care homes and of care home residents who died elsewhere; England 2014

The role of care homes in end of life care: Briefing 2, Table 2

Underlying cause of death (ICD-10 chapter)	All deaths in care homes	Deaths in a care home		Care home residents who died elsewhere
		Permanent residents	Temporary residents	
Mental and behavioural or Nervous system (F & G)	35% (35,926)	41% (27,615)	24% (8,311)	22% (6,224)
Circulatory disease (I)	22% (22,368)	22% (14,964)	21% (7,404)	27% (7,945)
Cancer (C)	18% (18,676)	11% (7,193)	33% (11,483)	12% (3,438)
Respiratory disease (J)	10% (10,325)	11% (7,036)	9% (3,289)	18% (5,195)
Other	14% (13,908)	15% (9,757)	12% (4,151)	21% (6,090)
All causes	100% 101,203	100% (66,565)	100% (34,638)	100% (28,892)

The leading underlying causes of death in care homes and among all deaths aged 75 or older, England 2014

The role of care homes in end of life care: Briefing 2, Table 3

Rank 1 is most common	All deaths in a care home, (101,203 deaths 21.7% of all deaths)	Permanent care home residents who died in a care home (66,565 deaths 14.3% of all deaths)	Temporary care home residents, who died in a care home (34,638 deaths 7.4% of all deaths)	Care home residents who died elsewhere (28,892 deaths 6% of all deaths)	All deaths aged 75 years or older, any place of residence any place of death, (318,385 deaths 68% of all deaths)
1	Dementia and Alzheimer's 31,585 deaths, 31%	Dementia and Alzheimer's 24,714 deaths, 37%	Dementia and Alzheimer's 6,871 deaths, 20%	Dementia and Alzheimer's 5,195 deaths, 18%	Dementia and Alzheimer's 46,236 deaths, 15%
2	Cerebrovascular diseases 8,968 deaths, 9%	Cerebrovascular diseases 6,272 deaths, 9%	Cerebrovascular diseases 2,696 deaths, 8%	Cerebrovascular diseases 3,055 deaths, 11%	Heart disease 38,536 deaths, 12%
3	Heart disease 6,379 deaths, 6%	Heart disease 4,085 deaths, 6%	Heart disease 2,294 deaths, 7%	Heart disease 2,826 deaths, 10%	Cerebrovascular diseases 25,780 deaths, 8%
4	Flu/pneumonia 4,296 deaths, 4%	Flu/pneumonia 3,137 deaths, 5%	Lung cancer 2,257 deaths, 7%	Flu/pneumonia 2,707 deaths, 9%	Flu/pneumonia 20,248 deaths, 6%
5	Emphysema/ bronchitis 3,609 deaths, 4%	Emphysema/ bronchitis 2,271 deaths, 3%	Emphysema/ bronchitis 1,338 deaths, 4%	Emphysema/ bronchitis 1,728 deaths, 6%	Emphysema/ bronchitis 18,841 deaths, 6%
6	Lung cancer 3,448 deaths, 3%	Parkinson's disease 1,643 deaths, 2%	Bowel cancer 1,305 deaths, 4%	Urinary disease 829 deaths, 3%	Lung cancer 14,150 deaths, 4%

Continued

The leading underlying causes of death in care homes and among all deaths aged 75 or older, England 2014

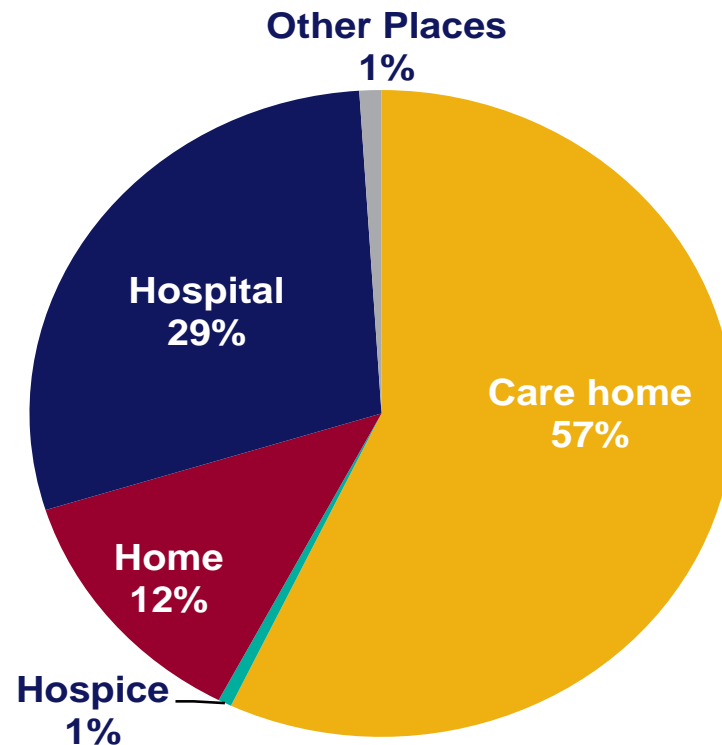
(continued..)

The role of care homes in end of life care: Briefing 2, Table 3

Rank 1 is most common	All deaths in a care home, (101,203 deaths 21.7% of all deaths)	Permanent care home residents who died in a care home (66,565 deaths 14.3% of all deaths)	Temporary care home residents, who died in a care home (34,638 deaths 7.4% of all deaths)	Care home residents who died elsewhere (28,892 deaths 6% of all deaths)	All deaths aged 75 years or older, any place of residence any place of death, (318,385 deaths 68% of all deaths)
7	Parkinson's disease 2,413 deaths, 2%	Heart failure 1,506 deaths, 2%	Prostate cancer 1,161 deaths, 3%	Lung cancer 679 deaths, 2%	Bowel cancer 7,914 deaths, 2%
8	Heart failure 2,258 deaths, 2%	Lung cancer 1,191 deaths, 2%	Flu/pneumonia 1,159 deaths, 3%	Accidental falls 613 deaths, 2%	Prostate cancer 7,073 deaths, 2%
9	Bowel cancer 2,089 deaths, 2%	Acute respiratory diseases (excluding flu/pneumonia) 1,184 deaths, 2%	Breast cancer 881 deaths, 3%	Cardiac arrhythmias 466 deaths, 2%	Urinary disease 6,807 deaths, 2%
10	Prostate cancer 1,996 deaths, 2%	Urinary disease 1,115 deaths, 2%	Parkinson's disease 770 deaths, 2%	Parkinson's disease 396 deaths, 1%	Lymphoid cancer 6,259 deaths, 2%
11	Other 34,162 deaths, 34%	Other 19,447 deaths, 29%	Other 13,906 deaths, 40%	Other 10,398 deaths, 36%	Other 126,541 deaths, 40%
Total	101,203 deaths, 100%	66,565 deaths, 100%	34,638 deaths, 100%	28,892 deaths, 100%	318,385 deaths, 100%

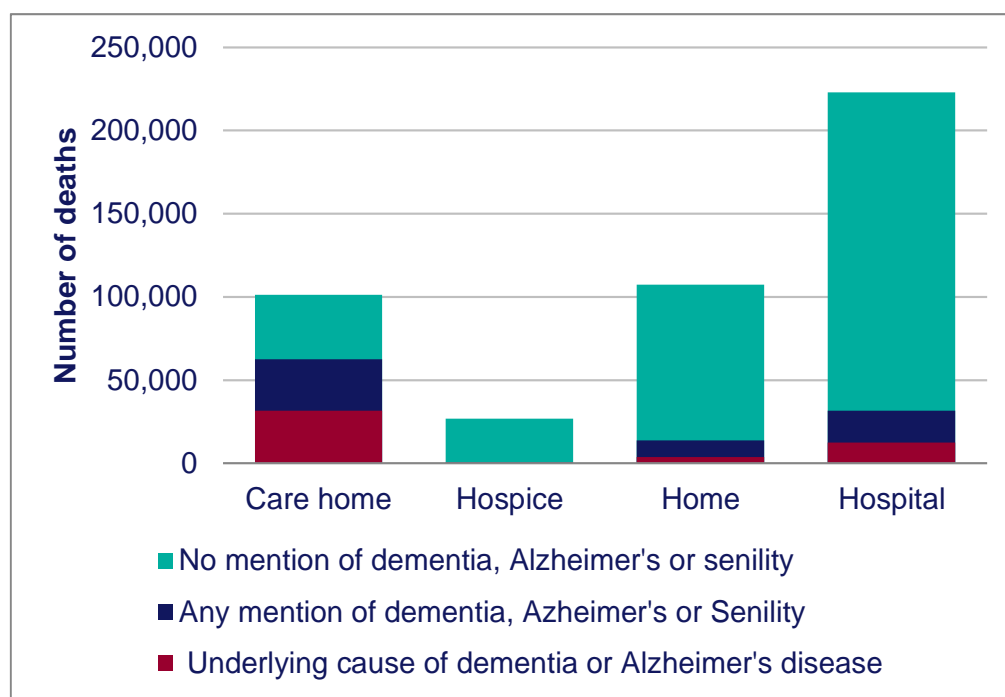
Distribution of place of death where causes of death include any mention of dementia, Alzheimer's disease or senility, England 2014

The role of care homes in end of life care: Briefing 2, Figure 3



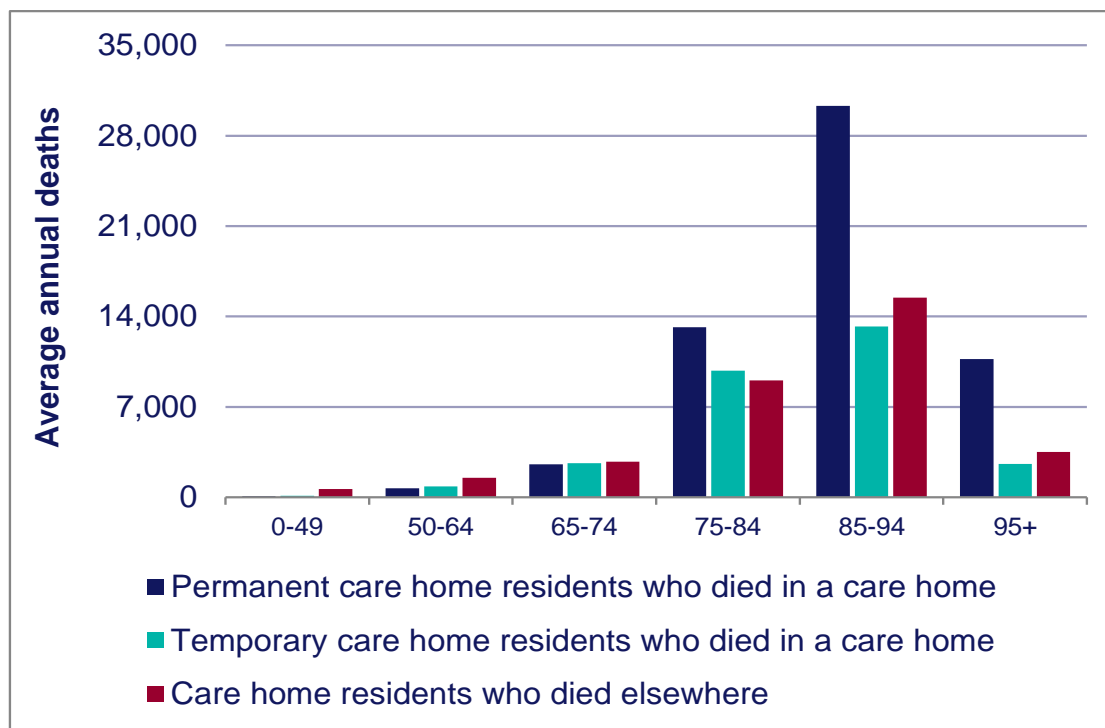
Number of deaths by place of death and causes of death including dementia, Alzheimer's disease or senility. England 2014

The role of care homes in end of life care: Briefing 2, Figure 4



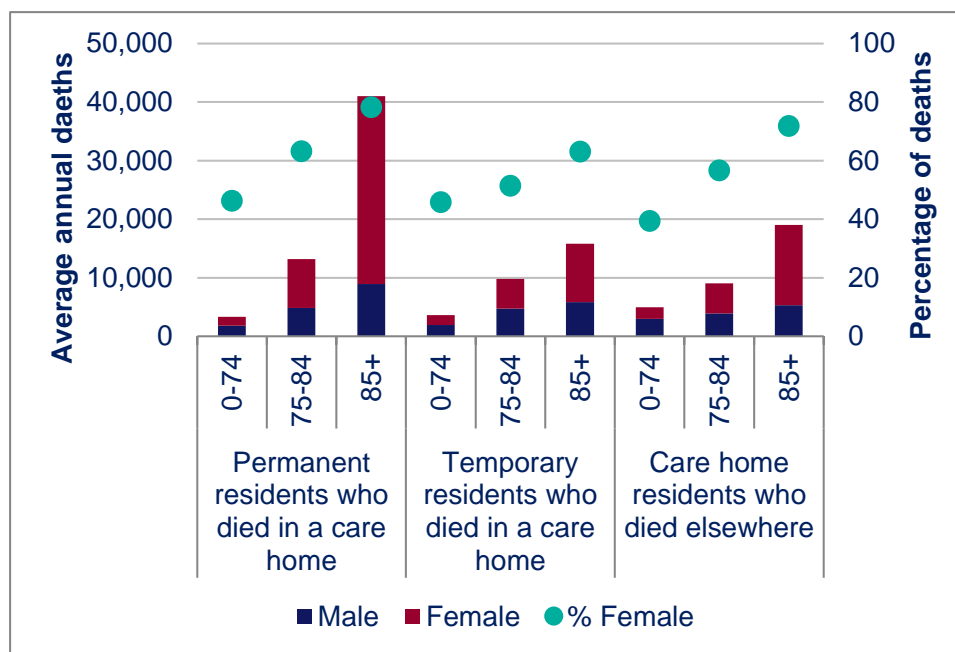
Age distribution of deaths in a care, England 2005-2014

The role of care homes in end of life care: Briefing 2, Figure 5



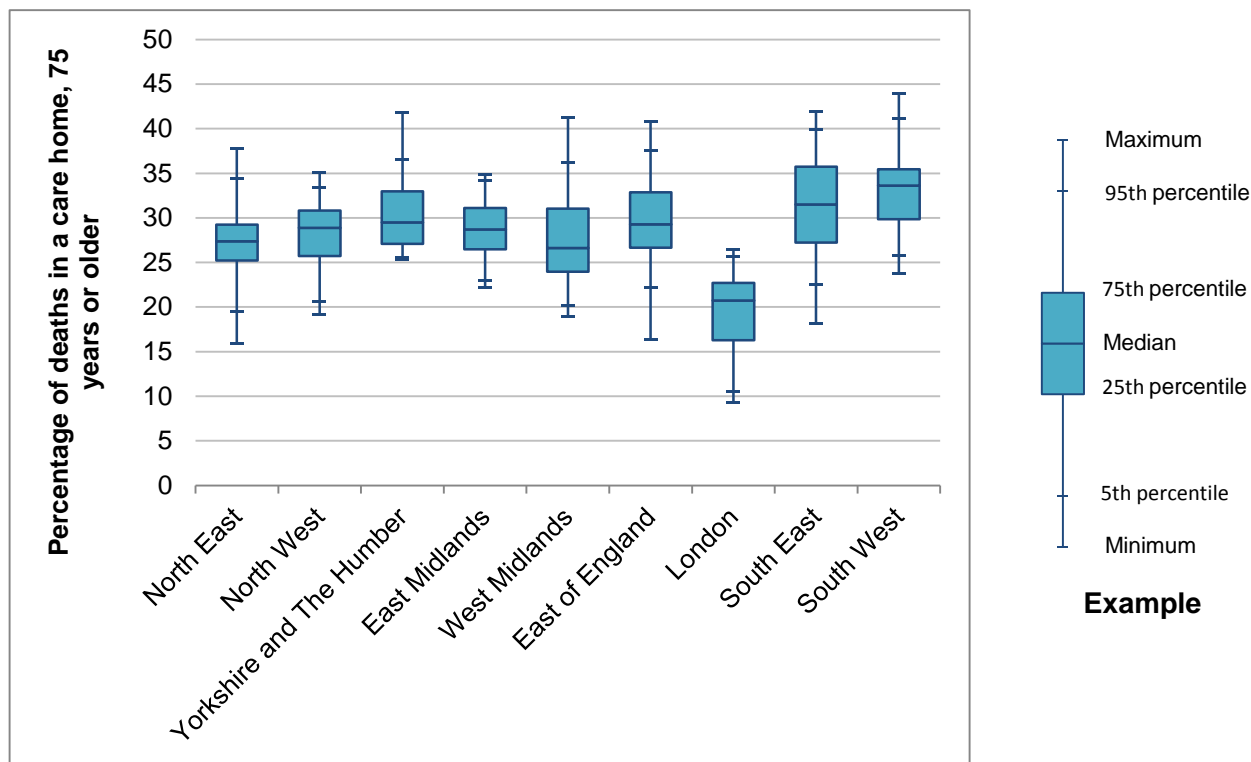
Gender ratio by age group for deaths in a care home, England, 2005-2014

The role of care homes in end of life care: Briefing 2, Figure 6



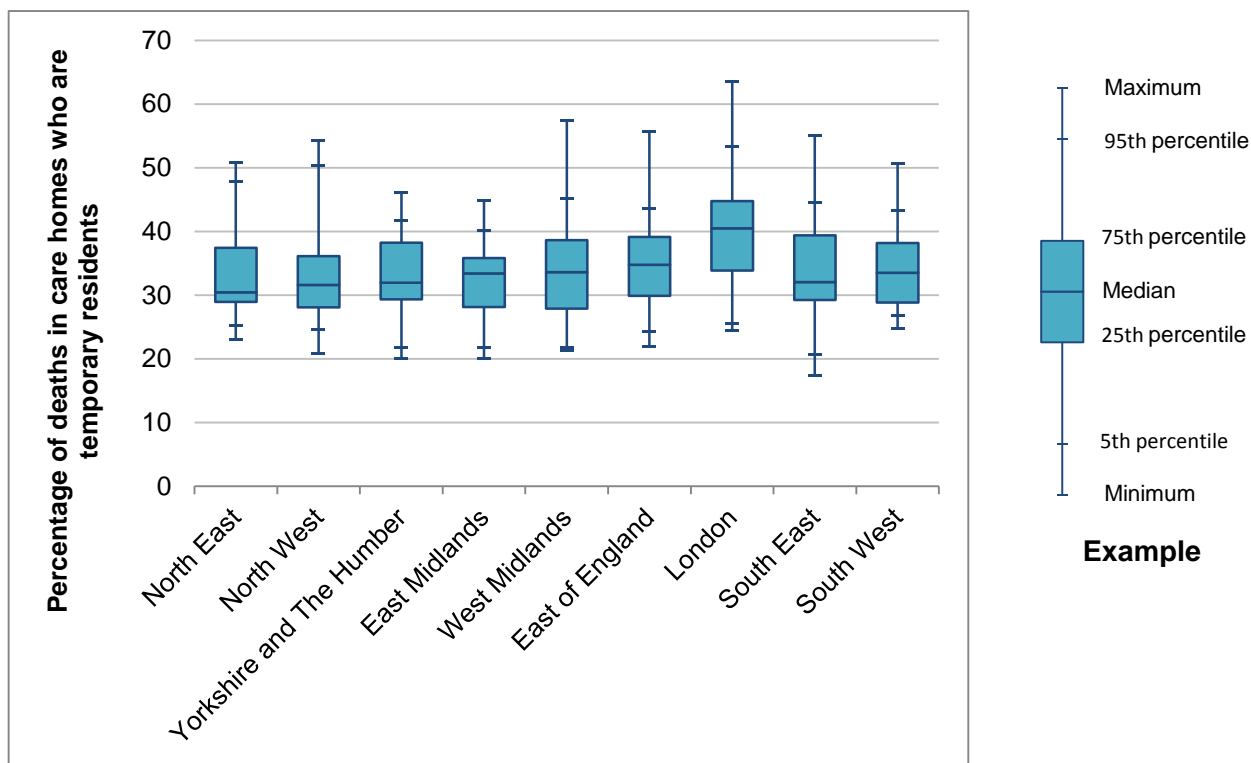
The percentage of deaths aged 75 years or older that occur in a care home, distribution for local authorities by region, England, 2012-2014

The role of care homes in end of life care: Briefing 2, Figure 7



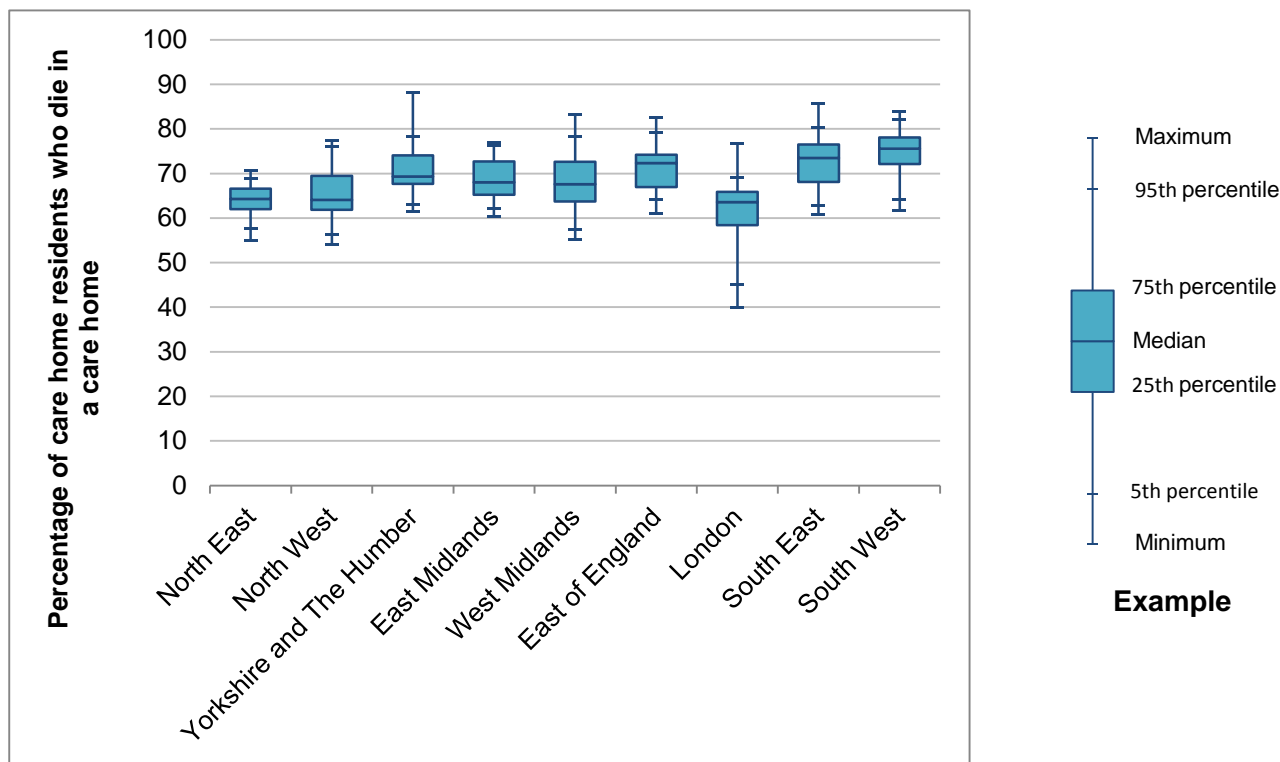
The proportion of people who died in care homes who are temporary residents, distribution for local authorities by region, England, 2012-2014

The role of care homes in end of life care: Briefing 2, Figure 8



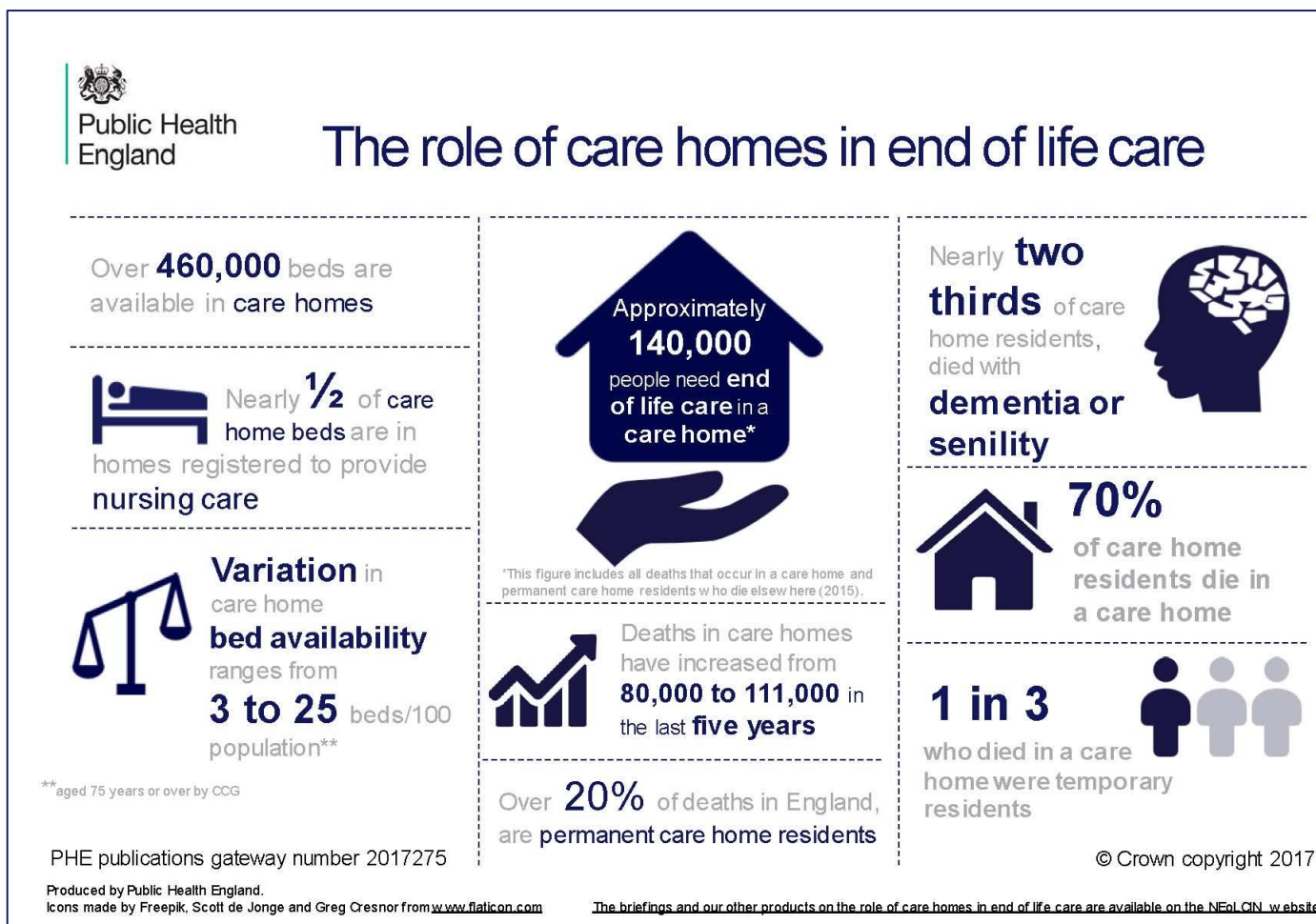
The percentage of care home residents who died in a care home, distribution for local authorities by region, England, 2012-2014

The role of care homes in end of life care: Briefing 2, Figure 9



Infographic

The role of care homes in end of life care



Results of a national survey of support to adult care homes in England: A specialist palliative care provider perspective

This survey of organisations providing specialist palliative care services to care homes highlights the good work they do and identifies the key challenges they face. The report examines the role of specialist palliative care in providing support to care homes in England.



Available at: <http://endoflifecareambitions.org.uk/results-of-a-national-survey-of-support-to-adult-care-homes-in-england/>

National End of Life Care Intelligence Network (NEoLCIN)

The screenshot shows the NEoLCIN website home page. At the top, there is a search bar and navigation links: Home, About us, Contact us, Feedback, News, Events, Publications, Tools, and How to use this website. The main banner features a photograph of people in a care setting and the text: "Cost-effective commissioning of end of life care. A report and analytical tool to support local decision making. read more...". Below the banner, a paragraph describes the network's aim: "Public Health England's National End of Life Care Intelligence Network (NEoLCIN) aims to improve the collection and analysis of information related to the quality, volume and costs of care provided by the NHS, social services and the third sector to adults approaching the end of life. This intelligence will help drive improvements in the quality and productivity of services." To the right of this paragraph is a "Sign up for email alerts" button with an envelope icon. Below the banner are four colored boxes: "End of Life Care Profiles" (orange), "Resources" (yellow), "Data sources" (green), and "Advice and information" (blue). The "Resources" box contains a list of links: "Results of a national survey of support to adult care homes in England", "e-alert Issue 09 - September 2017", and "Webinar slide packs and recordings".

Sign up for email alerts
Receive updates direct to your inbox

The graphic features a white envelope icon with a yellow pencil inside, set against a light blue background.

The image shows a sample of an e-alert from the NEoLCIN network, dated 06/7 February 2017. The header includes the Public Health England logo and the text "National End of Life Care Intelligence Network (NEoLCIN) e-alert 06/7 February 2017". The main content is titled "Welcome" and "Update from NEoLCIN Cost-effective commissioning of end of life care". It discusses a report from the Health Economics team in Public Health England (PHE) and an interactive tool. The text is dense and includes several paragraphs of detailed information.

Visit: <http://www.endoflifecare-intelligence.org.uk/home>

Contact us: neolcin@phe.gov.uk

Sign up at: http://www.endoflifecare-intelligence.org.uk/resources/sign_up_ealert